

**CITY OF WILLISTON
COMMUNITY REDEVELOPMENT AGENCY
AGENDA**

**DATE: August 14, 2017
TIME: 5:30 P.M.
PLACE: Council Room**

CALL TO ORDER

ROLL CALL

COMMUNITY REDEVELOPMENT AGENCY COMMITTEE MEMBERS:

Ken Schwiebert-Chair
Nick Williams-Vice Chair
Art Konstantino
Jonathan Lewis
Lisa Huigens

OTHERS:

Josie Lodder, City Planner
Latricia Wright, Agency Secretary

ITEM 1- APPROVAL OF MINUTES

ITEM 2- OLD BUSINESS

a. VETERAN'S MEMORIAL

ITEM 3- NEW BUSINESS

A. LETTER TO BLOCK 12 BUSINESSES.

ITEM 4- PUBLIC COMMENT

ITEM 5- COMMITTEE MEMBER ANNOUNCEMENTS

ITEM 6- NEXT MEETING DATE – September 11, 2017

ITEM 7- ADJOURNMENT

NOTICE:

IF A PERSON DECIDED TO APPEAL ANY DECISION MADE BY THIS COMMITTEE WITH RESPECT TO ANY MATTER CONSIDERED AT SUCH MEETING OR HEARING, HE WILL NEED A RECORD OF THE PROCEEDING, AND FOR SUCH PURPOSE, THEY MAY NEED TO ENSURE THAT A VERBATIM RECORD OF THE PROCEEDINGS IS MADE, WHICH RECORD INCLUDES THE TESTIMONY AND EVIDENCE UPON WHICH THE APPEAL IS TO BE BASED.

Community Redevelopment
Agency

Seat	Name	Term Begin	Term End	Resolution
1	Art Konstantino	03/16/2015	03/15/2019	2015-15
2	Dr Ken Schwiebert	3/17/2017	3/16/2021	
3	Jonathan Lewis	4/22/2014	3/15/2018	2014-23
4	Lisa Huigens	05/01/2016	05/01/2020	2016-22
5	Nick Williams	3/17/2015	3/16/2019	2015-06

MPA

M I C H A E L P A P E & A S S O C I A T E S , P A
LAND PLANNING • SITE DESIGN • LANDSCAPE ARCHITECTURE

WILLISTON VETERANS MEMORIAL BID FORM

Demo of Existing Sidewalk (by City of Williston)

10' x 135' LF North Concrete Sidewalk (by City of Williston)

10' x 239' LF South Concrete Sidewalk (by City of Williston)

Memorial Pad Site Prep (by City of Williston)

Benches and Installation (by City of Williston)

Belden Bricks - Kingsport Red (1,226 SF) (by City of Williston)

Laser Engraving of Bricks (by City of Williston)

Armed Forces Medallions (by City of Williston)

Flags (by City of Williston)

Finish Grade (by City of Williston)

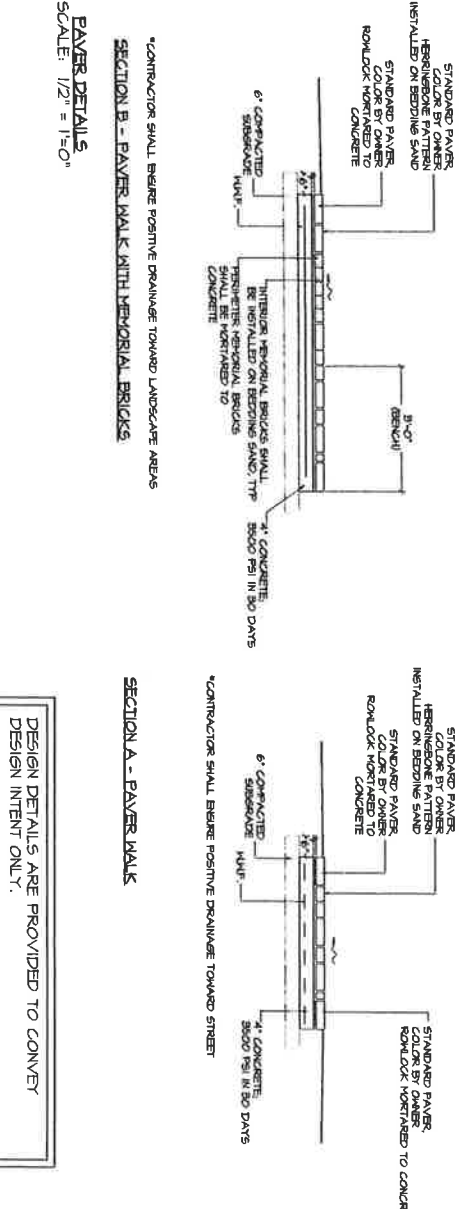
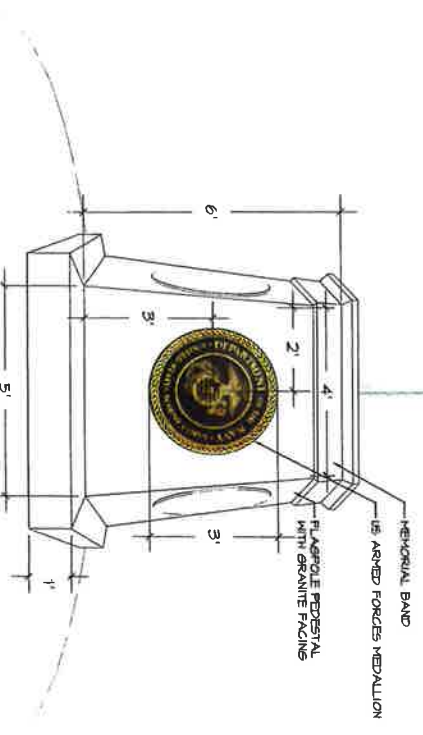
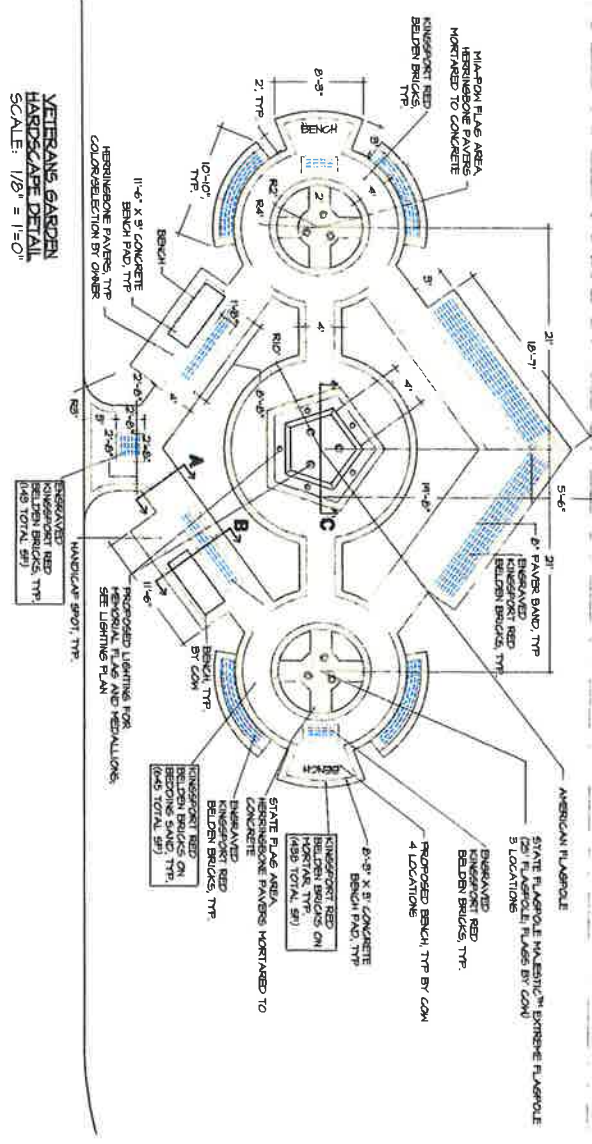
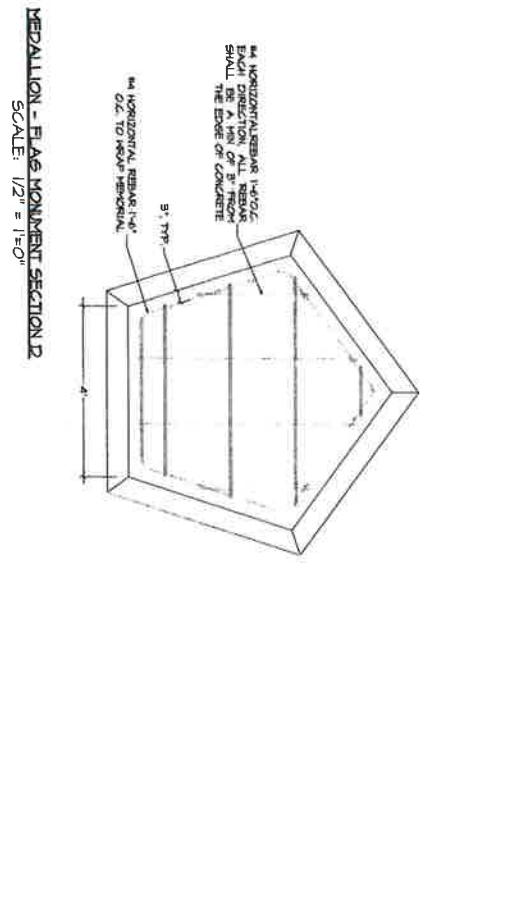
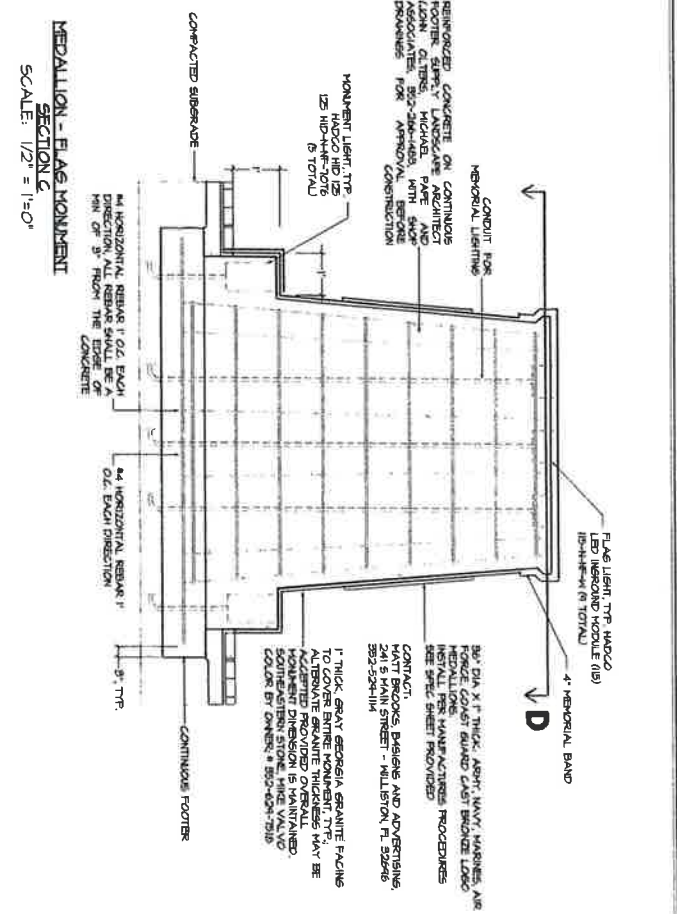
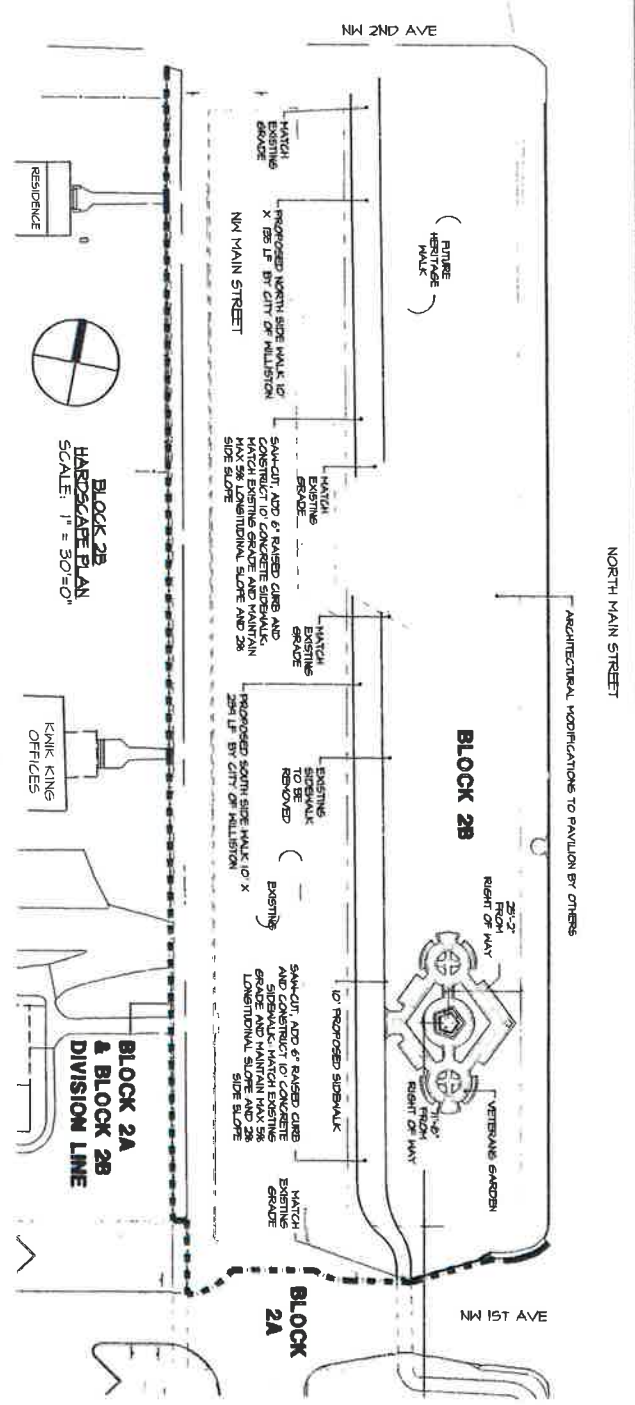
		<u>Unit Cost</u>	<u>Item Total</u>
Concrete Memorial Base (1,226 SF)	LS		\$ _____
Brick Installation (1,226 SF)	LS		\$ _____
Medallion - Flag Pedestal	LS		\$ _____
Installation of Armed Forces Medallions	LS		\$ _____
Flagpole (3)	EA	\$ _____	\$ _____
Flagpole Installation	LS		\$ _____
Monument Lighting (5)	EA	\$ _____	\$ _____
Monument Lighting Installation	LS		\$ _____
Flag Lighting (9)	EA	\$ _____	\$ _____
Flag Lighting Installation	LS	\$ _____	\$ _____
TOTAL:			\$ _____

Bidder: _____ Date: _____

Address: _____ Phone: _____

2351 S.E. 17TH STREET
OCALA, FLORIDA 34471

(352) 351-3500
FAX: (352) 351-5894
E-MAIL: mail@mpala.net



GENERAL NOTES:

1. ALL CONSTRUCTION SHALL BE IN ACCORDANCE WITH THE CITY OF OCALA STANDARD SPECIFICATIONS FOR CONSTRUCTION.
2. ALL MATERIALS SHALL BE APPROVED BY THE CITY ENGINEER PRIOR TO CONSTRUCTION.
3. ALL WORK SHALL BE COMPLETED WITHIN THE SPECIFIED TIME FRAME.
4. ALL UTILITIES SHALL BE DEPTH MARKED PRIOR TO CONSTRUCTION.
5. ALL EROSION CONTROL MEASURES SHALL BE INSTALLED PRIOR TO CONSTRUCTION.
6. ALL TREE PROTECTION MEASURES SHALL BE INSTALLED PRIOR TO CONSTRUCTION.
7. ALL SIGNAGE SHALL BE INSTALLED PRIOR TO CONSTRUCTION.
8. ALL LIGHTING SHALL BE INSTALLED PRIOR TO CONSTRUCTION.
9. ALL FURNITURE SHALL BE INSTALLED PRIOR TO CONSTRUCTION.
10. ALL PAINT SHALL BE INSTALLED PRIOR TO CONSTRUCTION.

CONTRACTOR SHALL BE RESPONSIBLE FOR:

1. OBTAINING ALL NECESSARY PERMITS.
2. PROTECTING ALL EXISTING UTILITIES AND STRUCTURES.
3. MAINTAINING ACCESS TO ALL ADJACENT PROPERTIES.
4. RESTORING ALL AREAS TO ORIGINAL OR BETTER CONDITION.
5. PROVIDING ALL NECESSARY EROSION CONTROL MEASURES.
6. PROVIDING ALL NECESSARY TREE PROTECTION MEASURES.
7. PROVIDING ALL NECESSARY SIGNAGE.
8. PROVIDING ALL NECESSARY LIGHTING.
9. PROVIDING ALL NECESSARY FURNITURE.
10. PROVIDING ALL NECESSARY PAINT.

HS-1



ARMED FORCES MEMORIAL
HILLSTON, FLORIDA
12.5-LED-10-FW
ARMED FORCES MEMORIAL

Ordering guide	Material	Quantity	Notes	Ordering guide
12.5 Composite Inground Lamp	12.5 Composite Inground Lamp	1	See notes	12.5 Composite Inground Lamp

Notes:
1. This lamp is designed for use in a landscape setting. It is not intended for use in a building or other enclosed space.
2. The lamp is designed for use in a landscape setting. It is not intended for use in a building or other enclosed space.
3. The lamp is designed for use in a landscape setting. It is not intended for use in a building or other enclosed space.

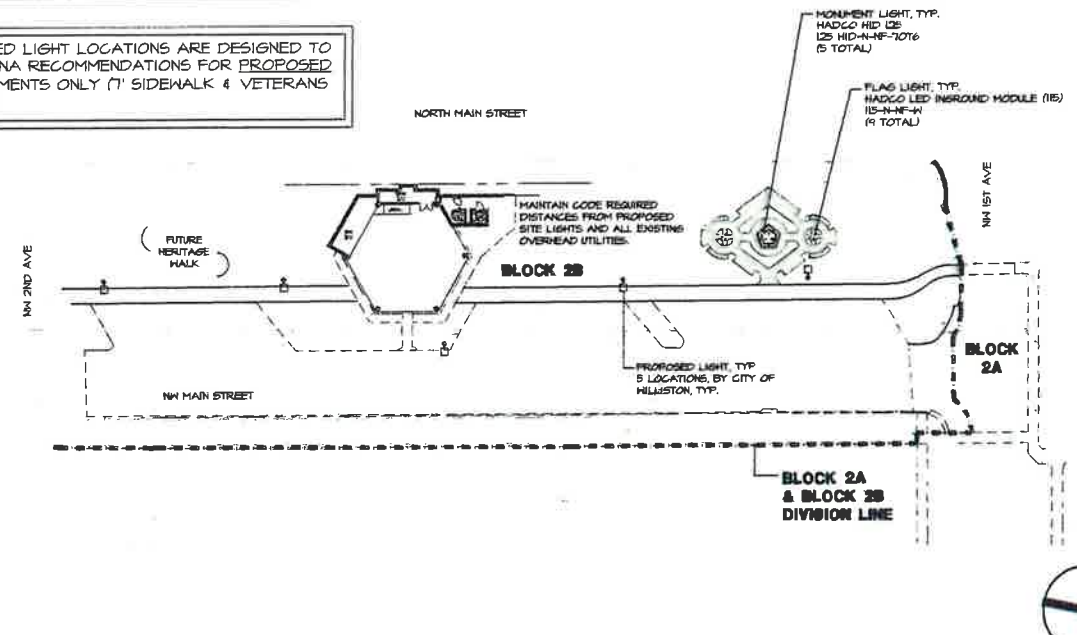
12.5 Composite Inground

Integrated lamp (PAR30) and Integrated module

Electrical Attributes	Optical Attributes	Accessories and Options
120 Volt 50/60 Hz 1.5 Amps	PAR30 1000 Lumens 120 Degree Beam Angle	Black White Silver

PHILIPS HADCO logo and contact information.

PROPOSED LIGHT LOCATIONS ARE DESIGNED TO MEET IESNA RECOMMENDATIONS FOR PROPOSED IMPROVEMENTS ONLY (7' SIDEWALK & VETERANS GARDEN)



SCALE: 1"=40'

SITE LIGHTING NOTES:

- Lighting shall be installed in accordance with the lighting plan by a licensed electrical contractor. The City of Hillston (City) is responsible to design and install the electrical connections necessary to supply power to the proposed lights. All connections shall be underground and in conduit.
- Confirm specifications with submittal of cutsheets and full product code numbers to Michael Page & Associates.
- This lighting layout meets the recommendations for safe lighting levels established by the Illuminating Engineering Society of North America in the general areas where lights have been provided. Architectural lighting will be required for areas around the building to maintain adequate lighting for safety and security, and such lighting is not addressed or shown on this plan. Any changes to the plan or specifications affect the photometrics, and may cause the lighting levels to fall below recommendations. Light levels were determined at finished grade.
- Original fixtures and arms as shown on plan.
- Only fixtures shown have been included in this calculation. Light installations for off site roadways and/or adjoining properties have not been included.
- Photometric statistics shown are for design purposes only. Variances in actual installation may cause these numbers to differ from actual measured values.

MONUMENT LIGHTING NOTES:

- Lighting shall be installed in accordance with the lighting plan by a licensed electrical contractor. The contractor is responsible to design and install the electrical connections necessary to supply power to the proposed lights. The contractor shall coordinate with the City for the source of power. All connections shall be underground and in conduit. Lighting shall be bid as lump sum and includes all work necessary to complete the project.
- Confirm specifications with submittal of cutsheets and full product code numbers to Michael Page & Associates.

The City of Hillston Electrical Department will be responsible for installation of transformers (where required) and the supplying of the meter and meter can and the connection of live power to the meter can.

The contractor shall be responsible for the complete installation of monument lights up to the transformer (power source), including permitting with City Electrical Department. The installed electrical items shall meet the following specifications:

- All lights shall be 120 volt.
- Minimum conduit size shall be 1 inch.
- Distribution panel shall be NEMA 3R rated including surge protection and lighting contractor with photo eye control for dusk to dawn operation.
- Minimum depth of conduit shall be 3 feet and meet state regulations for any street crossings.
- Transformer locations are as follows: (power source)
- As determined by City engineer

The City of Hillston shall be responsible for all aspects of site lighting as shown on the plans. To include but not be limited to: permitting, installing and installation of all site lighting.

- All lights shall be 120 volt.
- Minimum conduit size shall be 2 inches.
- Distribution panel shall be NEMA 3R rated including surge protection and lighting contractor with photo eye control for dusk to dawn operation.
- Maximum of two lights per circuit.
- Base mount receptacles shall be hot all the time and a maximum of 2 per circuit.
- Wiring shall be looped from pole to pole.
- Minimum depth of conduit shall be 3 feet and meet state regulations for any street crossings.
- Transformer locations are as follows:
- As determined by City engineer



ARMED FORCES MEMORIAL
HILLSTON, FLORIDA
12.5-LED-10-FW
ARMED FORCES MEMORIAL

Ordering guide	Material	Quantity	Notes	Ordering guide
12.5 Composite Inground Lamp	12.5 Composite Inground Lamp	1	See notes	12.5 Composite Inground Lamp

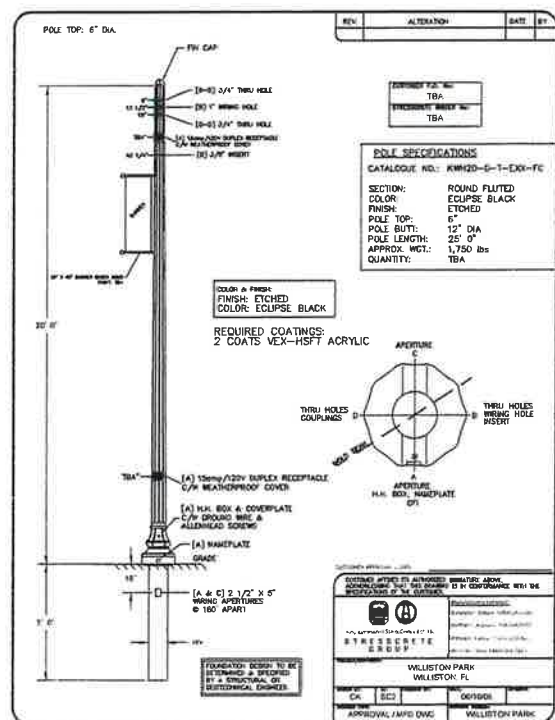
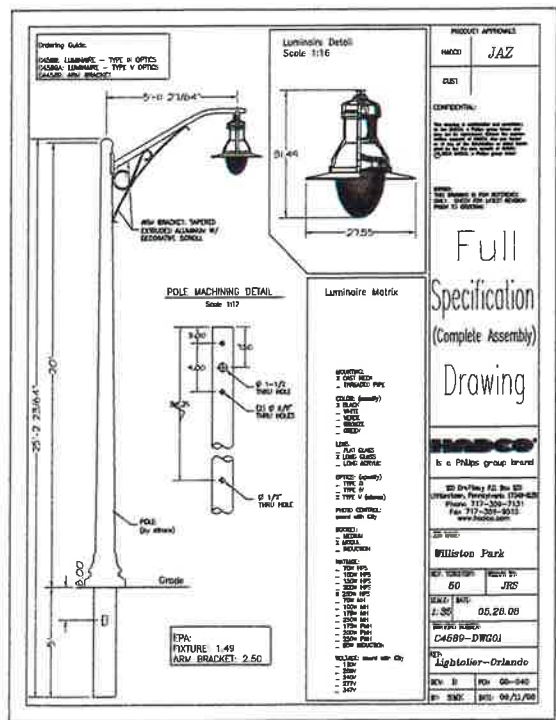
Notes:
1. This lamp is designed for use in a landscape setting. It is not intended for use in a building or other enclosed space.
2. The lamp is designed for use in a landscape setting. It is not intended for use in a building or other enclosed space.
3. The lamp is designed for use in a landscape setting. It is not intended for use in a building or other enclosed space.

12.5 Composite Inground

Integrated lamp (MR16 and PAR30) and Integrated module

Electrical Attributes	Optical Attributes	Accessories and Options
120 Volt 50/60 Hz 1.5 Amps	MR16 1000 Lumens 120 Degree Beam Angle	Black White Silver

PHILIPS HADCO logo and contact information.



HADCO LOCAL REPRESENTATIVE: MICHAEL LEE (352) 240-7442

STRESSCRETE/KING LUMINAIRE LOCAL REPRESENTATIVE: TOM VEAZEY (407) 848-7020

REVISIONS	DATE

MPA
MICHAEL PAPER ASSOCIATES, P.A.
LAND PLANNING • SITE DESIGN • LANDSCAPE ARCHITECTURE
2881 S.E. 17TH STREET • OCALA, FLORIDA 34647 • (352) 361-3600

HERITAGE PARK - VETERANS MEMORIAL
HILLSTON, FLORIDA
SITE LIGHTING PLAN

DATE: 07-21-17
JOB NO: 3501
DWS NO: 55011TG
DWN BY: SSM
CHKD BY: JG

SHEET 1 OF 1

LTG-1

SCHEDULE C (Form 1040)

Profit or Loss From Business (Sole Proprietorship)

Cross out with black marker

OMB No. 1545-0074

2016 Attachment Sequence No. 09

Department of the Treasury Internal Revenue Service (99)

Information about Schedule C and its separate instructions is at www.irs.gov/schedulec. Attach to Form 1040, 1040NR, or 1041; partnerships generally must file Form 1065.

Name of proprietor, Social security number (SSN), Principal business or profession, Business name, Business address, Accounting method, Did you materially participate, Did you start or acquire this business during 2016, Did you make any payments in 2016 that would require you to file Form(s) 1099?

Part I Income

1 Gross receipts or sales. See instructions for line 1 and check the box if this income was reported to you on Form W-2 and the "Statutory employee" box on that form was checked. 2 Returns and allowances. 3 Subtract line 2 from line 1. 4 Cost of goods sold (from line 42). 5 Gross profit. Subtract line 4 from line 3. 6 Other income, including federal and state gasoline or fuel tax credit or refund (see instructions). 7 Gross income. Add lines 5 and 6.

Part II Expenses. Enter expenses for business use of your home only on line 30.

8 Advertising. 9 Car and truck expenses (see instructions). 10 Commissions and fees. 11 Contract labor (see instructions). 12 Depletion. 13 Depreciation and section 179 expense deduction (not included in Part III) (see instructions). 14 Employee benefit programs (other than on line 19). 15 Insurance (other than health). 16 Interest: a Mortgage (paid to banks, etc.). b Other. 17 Legal and professional services. 18 Office expense (see instructions). 19 Pension and profit-sharing plans. 20 Rent or lease (see instructions): a Vehicles, machinery, and equipment. b Other business property. 21 Repairs and maintenance. 22 Supplies (not included in Part III). 23 Taxes and licenses. 24 Travel, meals, and entertainment: a Travel. b Deductible meals and entertainment (see instructions). 25 Utilities. 26 Wages (less employment credits). 27a Other expenses (from line 48). b Reserved for future use.

28 Total expenses before expenses for business use of home. Add lines 8 through 27a. 29 Tentative profit or (loss). Subtract line 28 from line 7. 30 Expenses for business use of your home. Do not report these expenses elsewhere. Attach Form 8829 unless using the simplified method (see instructions). Simplified method filers only: enter the total square footage of: (a) your home: and (b) the part of your home used for business: Use the Simplified Method Worksheet in the instructions to figure the amount to enter on line 30. 31 Net profit or (loss). Subtract line 30 from line 29. 32 If you have a loss, check the box that describes your investment in this activity (see instructions). 32a All investment is at risk. 32b Some investment is not at risk.